

正样
2023.09.25
B00

外部公开

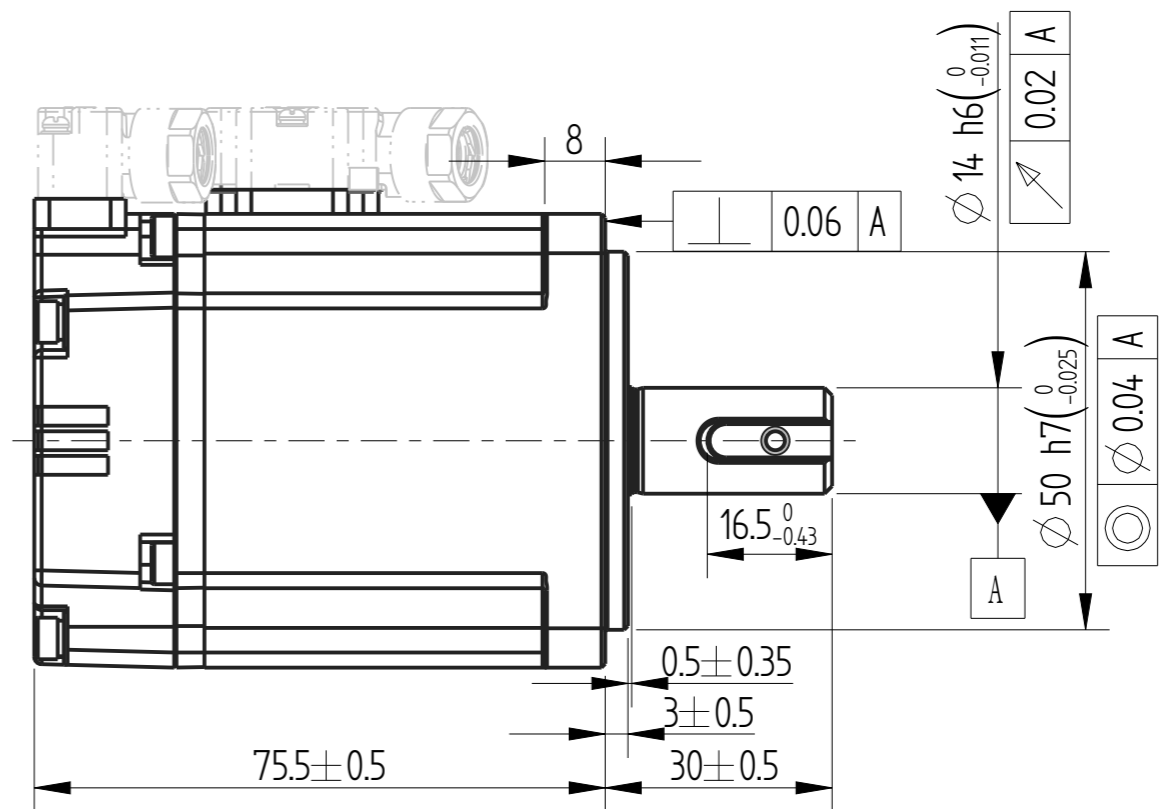
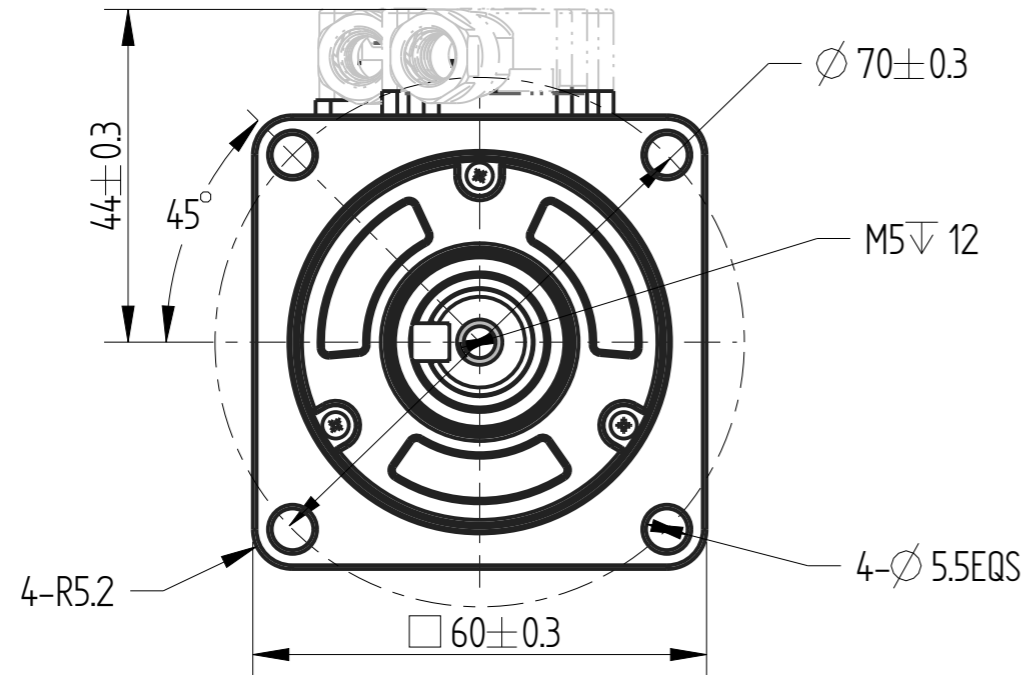
Copyright:Copyright infringement reserved.



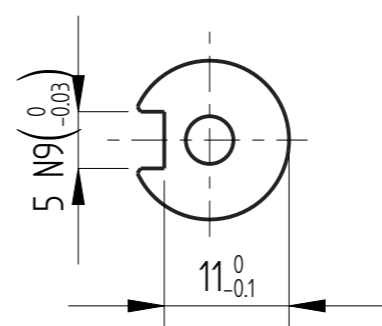
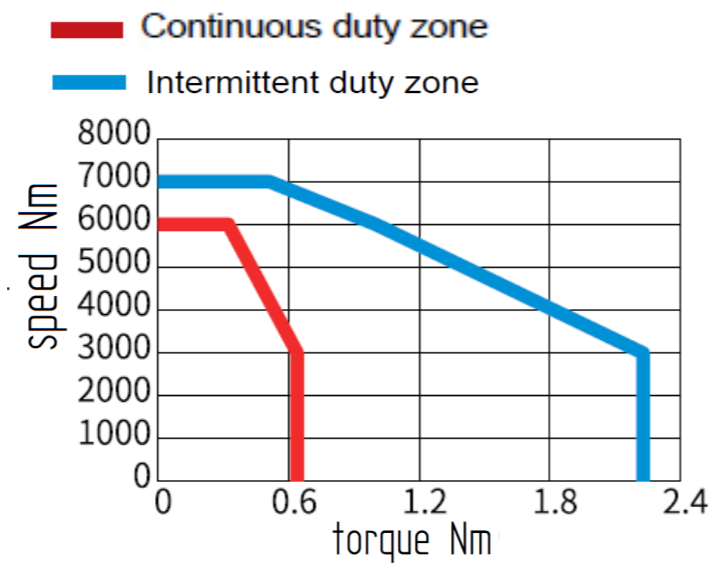
INOVANCE

A3

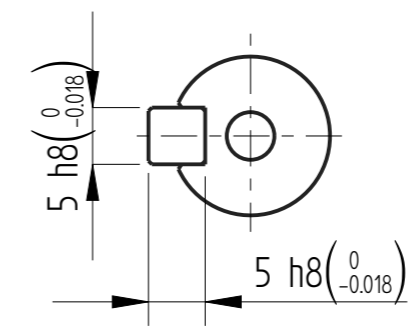
| Amendment | Description |
|-----------|-------------|
| | |



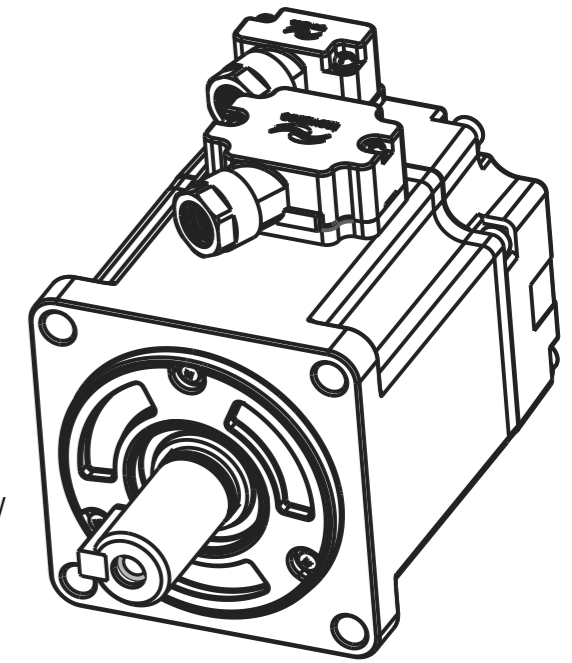
| Basic function parameters | |
|-------------------------------|-------|
| Rated power KW | 0.2 |
| Rated voltage V | 220 |
| Rated current A | ≤15 |
| Peak current at rated speed A | ≤5.8 |
| Rated torque Nm | 0.64 |
| Peak torque at rated speed Nm | 2.24 |
| Rated speed rpm | 3000 |
| Max speed rpm | 7000 |
| Rotor inertia kg·cm2 | 0.094 |
| Encoder resolution | 26bit |
| Insulation class | F |
| Protection Level | IP67 |
| Static torque of brake Nm | / |
| Brake power supply | / |
| Duty cycle | S1 |
| Radial line load N | ≤245 |
| Axial load N | ≤74 |



Dimension of shaft end



Dimension of shaft end with key



| | | | | | | | | |
|-----------------|---------------|-----------|----------|-----------------------|-------|---------|-------------|-------------------------|
| | | | | Motor outline drawing | | | 01118299-WX | |
| B00 | New Archive | / | 20230828 | | | | | |
| Version | Change method | Change by | Date | | | | | |
| Design | / | | | | | | | |
| Check | / | | | / | | | Mark | INOVANCE |
| Craft | / | | | | | | | |
| Verify | / | | | | | | | |
| Standardization | / | | | | | | | |
| Approve | / | | | Weight | Scale | Version | Page 1 of 1 | |
| | | | | / | 1:1 | B00 | Model | MS1H1-20B30CB-S631R-INT |